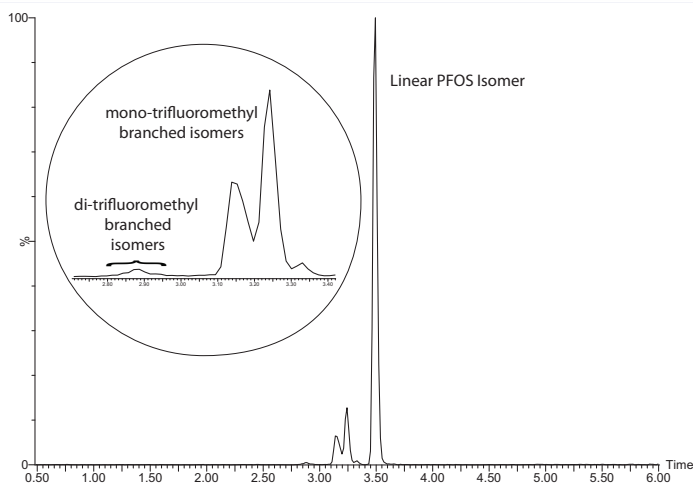


**NEW PRODUCTS****PFAS Mixtures of Linear and Branched Isomers**

The use of quantitative and qualitative certified reference standards containing both linear and branched isomers for the analysis of perfluoroalkyl and polyfluoroalkyl substances (PFAS) in environmental samples is detailed in multiple U.S. EPA methods. As such, Wellington has been working hard to produce characterized reference standards that meet the needs of these methods and is pleased to announce the addition of isomeric mixtures for FOSA (**br-FOSA**), N-MeFOSA (**br-NMeFOSA**), N-EtFOSA (**br-NEtFOSA**), N-MeFOSE (**br-NMeFOSE**), and N-EtFOSE (**br-NEtFOSE**) to our PFAS product line. Each mixture listed below contains the linear isomer as well as mono-trifluoromethyl and di-trifluoromethyl branched isomers in ratios that match technical materials as closely as possible, but with an overall chemical purity of greater than 98%.

Catalogue Number	Product (methanol)	Qty	Conc
<b>br-PFHxSK</b>	Potassium perfluoroheptanesulfonate isomeric mixture	1.2 mL	50.0 µg/mL
<b>br-PFOSK</b>	Potassium perfluorooctanesulfonate isomeric mixture	1.2 mL	50.0 µg/mL
<b>NEW br-FOSA</b>	Perfluorooctanesulfonamide isomeric mixture (in isopropanol)	1.2 mL	50.0 µg/mL
<b>NEW br-NMeFOSA</b>	N-Methylperfluorooctanesulfonamide isomeric mixture	1.2 mL	50.0 µg/mL
<b>NEW br-NEtFOSA</b>	N-Ethylperfluorooctanesulfonamide isomeric mixture	1.2 mL	50.0 µg/mL
<b>NEW br-NMeFOSE</b>	2-(N-Methylperfluorooctanesulfonamido)ethanol isomeric mixture	1.2 mL	50.0 µg/mL
<b>NEW br-NEtFOSE</b>	2-(N-Ethylperfluorooctanesulfonamido)ethanol isomeric mixture	1.2 mL	50.0 µg/mL
<b>br-NMeFOSAA</b>	N-Methylperfluorooctanesulfonamidoacetic acid isomeric mixture	1.2 mL	50.0 µg/mL
<b>br-NEtFOSAA</b>	N-Ethylperfluorooctanesulfonamidoacetic acid isomeric mixture	1.2 mL	50.0 µg/mL



**DISTRIBUTED BY:**  
**BCP INSTRUMENTS**  
12 avenue des Saules  
69600 OULLINS, France  
tel +33(0)4 72 49 72 65  
www.bcp-instruments.com  
contact@bcp-instruments.com

